

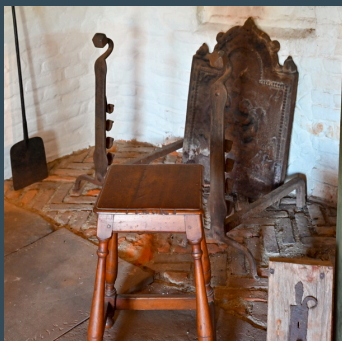
# The Buttolph-Williams House



The house that inspired the setting of Elizabeth George Speare's Newbery Medal-winning young adult novel, "The Witch of Blackbird Pond"



Capturing the spirit of Pilgrim life in 17th-century New England



249 Broad Street, Wethersfield, CT 06109  
[wdsmuseum.org](http://wdsmuseum.org) / 860-529-0612



A Connecticut Landmarks Property  
Operated by the Webb Deane Stevens Museum



# House Highlights

- Built c. 1711, the Buttolph-Williams House is a National Historic Landmark.
- Connecticut Landmarks acquired the house in 1941 and opened it to the public in 1951. The restoration is considered to be the best-surviving example of a 17th century-style Connecticut Valley House.
- The interiors are furnished with rare 17th and early 18th century antiques assembled by renowned collectors and dealers.
- The best bedchamber was designed and decorated by Katherine Prentiss Murphy, one of the 20th century's most distinguished collectors.
- The kitchen features an enormous open hearth and a remarkable collection of early Colonial era cooking utensils, wooden ware, and pewter.



The medieval appearance of the exterior and the romantic interiors inspired local author Elizabeth George Speare to use the Buttolph-Williams house as the setting for her novel for young adults, "The Witch of Blackbird Pond" (first published in 1958). This story of a young, orphaned girl from Barbados who arrives unannounced to live with her aunt and uncle in Wethersfield addresses the issues of ignorance, illiteracy, prejudice and superstition in a small, 17th century settlement. The book won the John Newbery Medal for distinguished contribution to American literature for children in 1959 and continues to be required reading for many elementary school students in the United States.



## Visitor Information

The Buttolph-Williams House is open for tours Thursday-Saturday at 10:00am. Tours leave directly from the Webb Deane Stevens Museum, 211 Main Street, Wethersfield. Please arrive 10 minutes early to purchase tickets. Tours are available May-October. Admission is \$10 per person.